

COVID-19 Fact Sheet:

North America – June 25, 2020



Author: Josh Strongin, *Lead Intelligence Analyst – North America*

Contact: Josh.Strongin@everbridge.com

OVERVIEW

As of Thursday, June 25, the novel coronavirus (COVID-19) outbreak in the United States has worsened significantly with major resurgences reported in states in the South and West. Meanwhile, the situation in Canada continues to improve as numbers of cases and deaths decrease across the country. The U.S. daily average of cases has risen every day over the last two weeks, and on Wednesday, the country reported its highest daily case count at over 38,000 new cases. The United States is currently reporting at least 2,411,400 cases and at least 122,482 deaths while Canada is reporting at least 102,242 cases and at least 8,484 deaths.

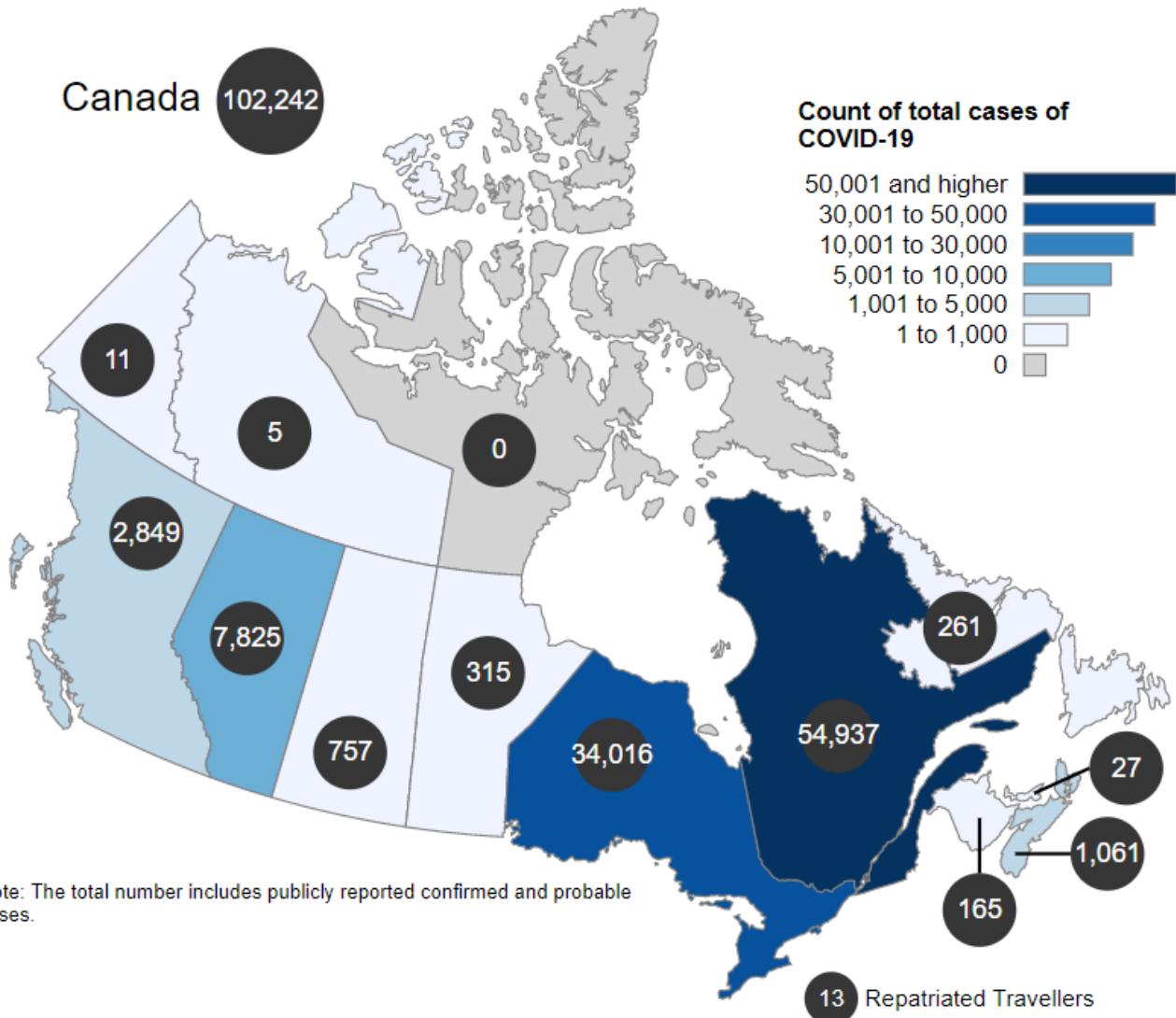
In response to increasing cases, several U.S. states, including Texas, Louisiana, and Kansas, have temporarily paused their reopening plans; however, there has yet to be any reinstatement of restrictions. Multiple localities across the U.S. have also begun to institute mandatory rules for face coverings. At least 29 U.S. states have reported increases in daily cases over the last two weeks and at least 13 states have reported a daily high in cases within the past week. Arizona, Florida, and Texas continue to report the most concerning trends, with all three states reporting increases in daily cases, hospitalizations, and test positivity rate. Public health officials have expressed concern that current outbreaks are likely to worsen and, due to the lack of current restrictions, may easily spread within and across states. As such, the public is advised to continue monitoring developments related to the COVID-19 outbreak closely. As reopenings continue and restrictions are loosened, a chart has been included at the end of this report detailing reopening guidance by states and provinces, including links to government websites and orders.

COVID-19 SPREAD WITHIN NORTH AMERICA

CANADA

As of Thursday, June 25, the Public Health Agency of Canada (PHAC) has reported at least 102,242 positive or presumptive cases of COVID-19 and at least 8,484 death across all provinces and territories. Over 65,000 people have recovered while an estimated 28,600 cases remain active. This was the second week in a row that the rate of recovered patients was higher than the rate of new cases. Ontario and Quebec, the two hardest-hit provinces, are reporting their lowest seven-day cases-per-million average since the outbreak began, 13.5 and 12.3 respectively, down from highs of 40 in Ontario and 129 in Quebec. Prince Edward Island, the Yukon, Northwest Territories, and Nunavut all continue to report no active cases while Newfoundland and Labrador is reporting just three.

Canada COVID-19 Cases as of Thursday, June 25

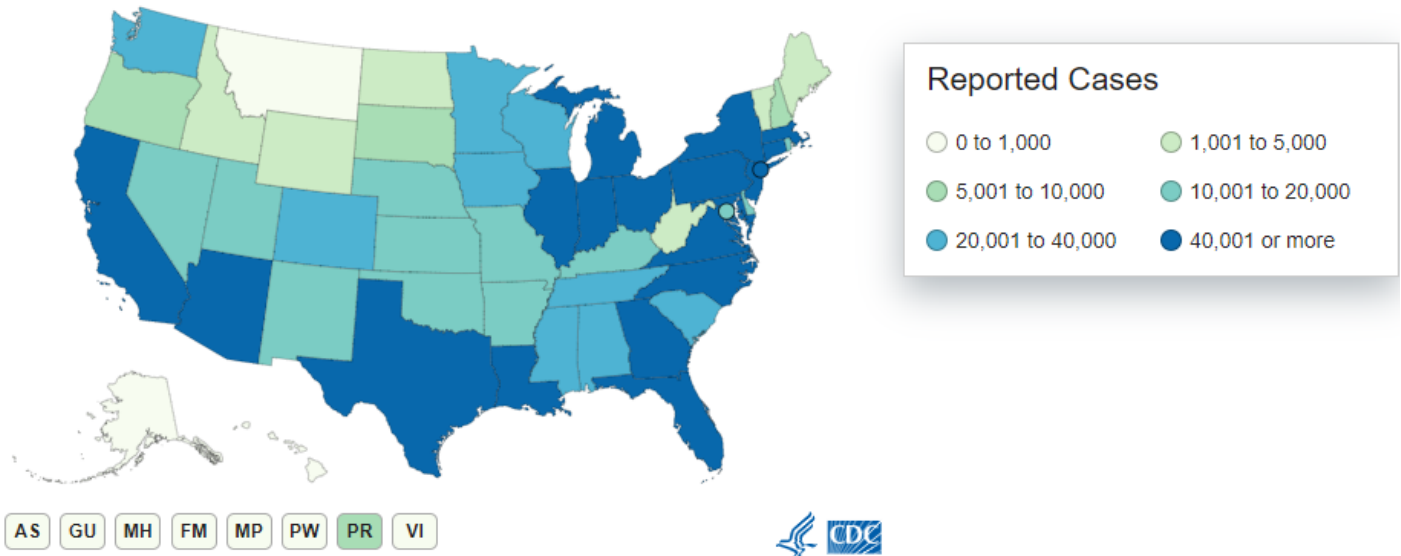


Source: PHAC

UNITED STATES

As of Thursday, June 25, according to state health departments and the U.S. Centers for Disease Control and Prevention (CDC), at least 2,411,400 COVID-19 cases and at least 122,482 deaths have been reported across all 50 states and Washington DC. Within the last week, Texas and Florida became the sixth and seventh states to report at least 100,000 cases, joining New York, California, New Jersey, Illinois, and Massachusetts. California (196,044) supplanted New Jersey (173,132) for the second-most cases in the country and is poised to become just the second state to report at least 200,000 cases. Hawaii, Alaska, and Montana remain the only states to not report at least 1,000 cases.

U.S. States Reporting COVID-19 Cases as of Thursday, June 25



Source: CDC

TRENDS TO FOLLOW

US COVID-19 DATA TRENDS								
State	Average New Daily Cases 6/18-6/24	Average New Daily Cases 6/11-6/17	Percent Change in New Cases (Past Week vs Week Before)	Percent Change in New Tests (Past Week vs Week Before)	Percent Change in New Deaths (Past Week vs Week Before)	Percent Change in Hospitalization from Week Before	Current ICU Availability	Percent of Tests returning Positive over the Past Week
Alabama	679	760	-10.7%	29.0%	41.1%	1%	28%	13.1%
Alaska	14	15	-4.8%	79.4%	-100.0%	-11%	44%	0.5%
Arizona	2,721	1,584	71.8%	41.0%	10.5%	36%	24%	23.2%
Arkansas	538	463	16.3%	48.1%	81.5%	18%	35%	7.5%
California	4,744	3,298	43.9%	23.8%	-6.4%	18%	36%	5.8%
Colorado	207	167	23.7%	11.0%	-25.0%	-12%	40%	4.0%
Connecticut	69	155	-55.4%	-12.8%	-40.7%	-30%	46%	1.6%
Delaware	64	55	15.5%	-25.5%	471.4%	8%	39%	3.6%
District of Columbia	40	44	-9.7%	18.4%	-23.5%	-12%	28%	2.3%
Florida	3,756	2,193	71.3%	-10.7%	7.5%	N/A	32%	14.2%
Georgia	1,336	864	54.6%	23.8%	-32.0%	22%	26%	11.4%
Hawaii	11	8	31.0%	11.6%	0.0%	N/A	38%	0.8%
Idaho	123	53	131.6%	32.0%	-66.7%	N/A	46%	8.0%
Illinois	642	621	3.4%	14.7%	-18.7%	-14%	46%	2.7%
Indiana	304	382	-20.5%	29.5%	13.0%	-7%	39%	3.6%
Iowa	321	262	22.5%	3.5%	-38.5%	-26%	48%	6.1%
Kansas	184	128	44.1%	3.4%	55.6%	N/A	46%	6.5%
Kentucky	195	159	22.7%	-2.3%	14.3%	-16%	33%	4.0%
Louisiana	549	658	-16.5%	30.6%	8.2%	8%	34%	7.1%
Maine	26	28	-8.5%	-5.5%	0.0%	-4%	36%	1.4%
Maryland	338	501	-32.5%	6.2%	-35.7%	-18%	26%	4.9%
Massachusetts	209	285	-26.7%	3.8%	-12.1%	-3%	30%	2.2%
Michigan	294	188	56.5%	17.2%	-9.6%	0%	31%	2.0%

US COVID-19 DATA TRENDS

State	Average New Daily Cases 6/18-6/24	Average New Daily Cases 6/11-6/17	Percent Change in New Cases (Past Week vs Week Before)	Percent Change in New Tests (Past Week vs Week Before)	Percent Change in New Deaths (Past Week vs Week Before)	Percent Change in Hospitalization from Week Before	Current ICU Availability	Percent of Tests returning Positive over the Past Week
Minnesota	352	347	1.5%	53.2%	-30.2%	-1%	37%	3.4%
Mississippi	398	308	29.1%	-28.9%	8.8%	15%	30%	11.0%
Missouri	320	188	69.9%	-16.7%	193.1%	2%	41%	8.0%
Montana	19	10	91.9%	-0.5%	100.0%	113%	37%	1.2%
Nebraska	152	168	-9.3%	13.7%	-40.5%	-20%	39%	5.3%
Nevada	360	234	54.0%	-33.0%	4.8%	23%	34%	10.7%
New Hampshire	30	37	-18.7%	-14.9%	-57.5%	-9%	52%	1.9%
New Jersey	313	337	-7.0%	6.6%	-52.4%	-5%	58%	1.3%
New Mexico	129	116	10.8%	3.6%	-32.6%	-12%	46%	3.3%
New York	646	712	-9.3%	0.7%	-28.4%	-21%	46%	1.1%
North Carolina	1,331	1,209	10.1%	5.8%	25.7%	6%	25%	8.0%
North Dakota	28	32	-12.8%	11.5%	100.0%	4%	71%	2.5%
Ohio	620	407	52.4%	31.6%	-22.7%	8%	58%	4.9%
Oklahoma	372	203	83.3%	19.8%	-11.1%	36%	39%	9.0%
Oregon	175	165	5.8%	20.3%	-23.1%	31%	35%	3.5%
Pennsylvania	482	425	13.5%	13.8%	-28.2%	-4%	35%	4.4%
Rhode Island	56	65	-14.2%	-18.4%	-28.1%	-17%	12%	2.6%
South Carolina	1,049	685	53.1%	111.1%	69.2%	33%	26%	18.7%
South Dakota	53	64	-16.8%	-15.7%	-33.3%	-13%	28%	6.1%
Tennessee	727	598	21.6%	-43.6%	-15.5%	13%	29%	6.5%
Texas	4,227	2,417	74.9%	23.8%	2.7%	49%	34%	10.9%
Utah	491	354	38.6%	-7.9%	0.0%	-13%	38%	14.5%
Vermont	8	5	60.0%	-25.7%	100.0%	18%	44%	1.3%
Virginia	534	514	3.9%	-12.3%	1.4%	3%	33%	4.6%
Washington	162	347	-53.3%	-64.2%	-3.6%	-11%	41%	3.4%
West Virginia	36	26	38.5%	-24.1%	0.0%	-4%	36%	1.7%

US COVID-19 DATA TRENDS

State	Average New Daily Cases 6/18-6/24	Average New Daily Cases 6/11-6/17	Percent Change in New Cases (Past Week vs Week Before)	Percent Change in New Tests (Past Week vs Week Before)	Percent Change in New Deaths (Past Week vs Week Before)	Percent Change in Hospitalization from Week Before	Current ICU Availability	Percent of Tests returning Positive over the Past Week
Wisconsin	330	266	24.0%	-4.4%	11.9%	0%	48%	3.6%
Wyoming	24	19	25.7%	-239.2%	100.0%	-13%	60%	3.6%

Data sources: Johns Hopkins University and Medicine, The COVID Tracking Project

Colors represent whether a statistic is getting better, worse, or stable compared to the prior week. **Green** boxes indicate a situation is improving. **Yellow** boxes indicate a situation has remained stable. **Red** boxes indicate that a situation is deteriorating. Trends are independent for each statistic except for the Percent Change in New Tests column, the trend for this column is determined by whether the testing percentage is higher or lower than the Percentage Change in New Cases. A state where the percentage change in tests is lower than the percentage change in cases would be red as that indicates more cases were found with fewer tests, indicating the increase could be due to a higher percentage of the population being infected and not just an increase in testing. A state where the percentage change in tests is higher than the percentage change in cases would be green as that indicates an increase in cases is largely attributable to an increase in testing. Example: Arizona had a 41 percent increase in testing but a 71.8 percent increase in cases, therefore it is red and is likely seeing a new outbreak. Oregon had a 20.3 percent increase in testing but only a 5.8 percent increase in cases, therefore it is likely the case increase is attributable to increased testing and not a new outbreak.

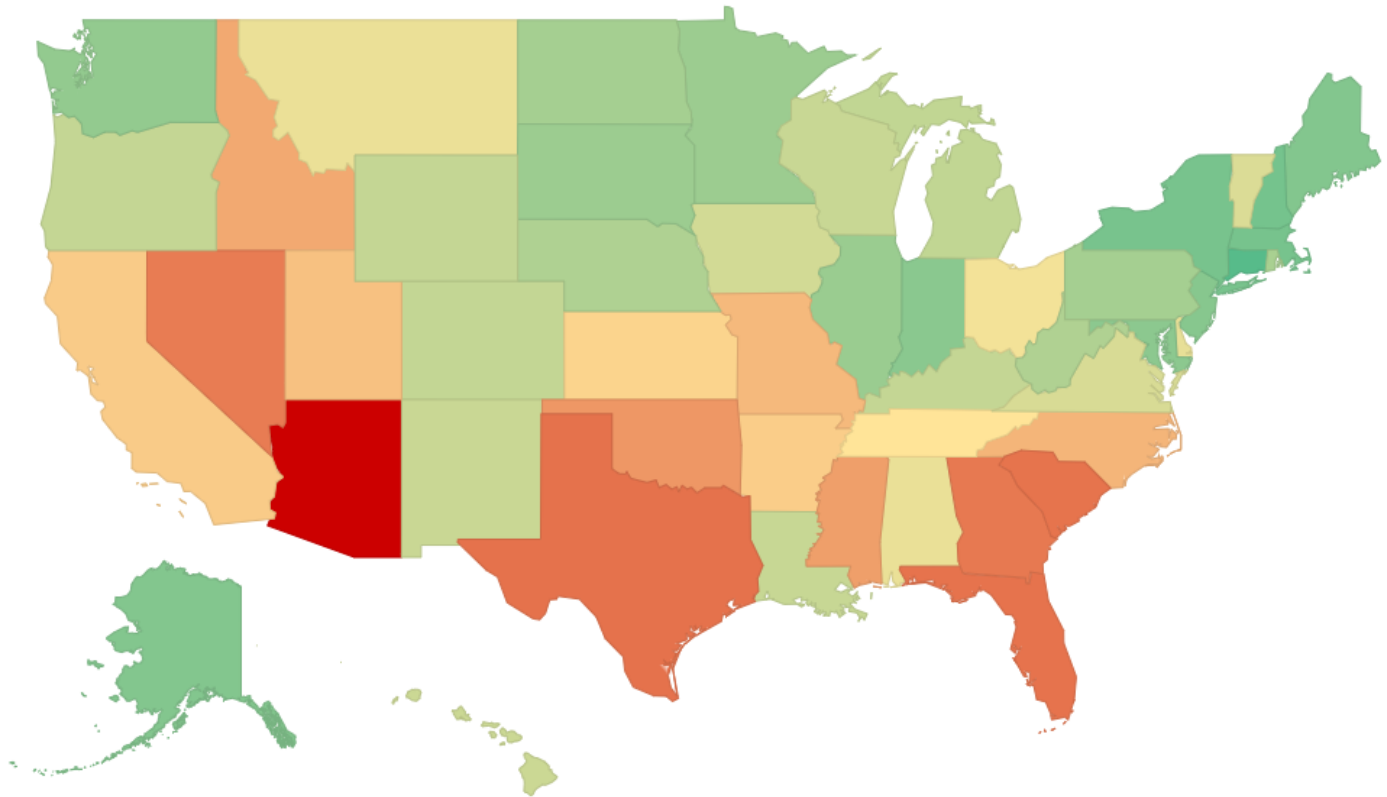
Percent Change in Hospitalization is the change in total hospitalization numbers while the Current ICU Availability is the percentage of ICU beds currently available in that state. The Percent of Tests returning Positive over the Past Week is the average positivity rate for a state over the past week. While the color used is relative to the change from the week prior, the World Health Organization (WHO) has noted that a positivity rate of five percent or less is expected for areas that are seeing containment of the virus.

At least 29 states in the U.S. have reported increases in daily cases over the last two weeks. The national daily average has risen significantly from a low of just over 21,000 cases on June 8 to over 32,000 as of June 24. On Tuesday and Wednesday, the U.S. had consecutive single-day records for new cases, with over 38,000 reported on Wednesday. There continues to be a regional factor to the outbreak as the Northeast reports a continued decrease in daily cases even as exponential increases are being reported in the South and West. Although the outbreak appears to be worsening in terms of daily cases, the daily death rate has continued to decrease nationally.

At least 13 states have set new daily highs in cases over the last week including three of the most populous states in the United States: California, Florida, and Texas. Outbreaks have significantly worsened in Florida, Texas, and Arizona. All three states have continued to see record increases in cases and hospitalizations. In addition, all three states have reported positivity rates over ten percent, suggesting the increases in cases are not directly due to an increase in testing.

Florida has reported a week-to-week decrease in testing in addition to the increasing cases. A number of other states are also reporting concerning trends of increases in both daily cases and hospitalizations. This includes North Carolina, Georgia, Mississippi, South Carolina, and Nevada.

RIMC COVID-19 Risk Score



Data sources: Johns Hopkins University and Medicine, The COVID Tracking Project

The risk score is displayed as colors, ranging from red (poor/deteriorating situation), to yellow (neutral/relatively stable situation), to green (good/improving situation). The colors generally represent if the situation is deteriorating or improving, the change in the risk of exposure, and the strain on state resources over the past two weeks. The score is comprised of multiple factors, which are weighted according to their relative importance in the status and trend of the outbreak. This includes the number of new cases per one million people in a state (high weight), the percent change in new cases from week to week (moderate weight), the level to which a change in new cases can be correlated with a change in testing (moderate weight), the percent of tests returning positive (high weight), and the percent change in hospitalizations (high weight). The result is an approximation of these trends and factors.

ASSESSMENT

While Canada shows continued signs of containment to their COVID-19 outbreak, the situation in the U.S. has drastically deteriorated over the last several weeks. The resurgent U.S. outbreak has been driven largely by massive increases in cases across portions of the South and Southwest. Many of the states affected, including Arizona, Texas, and Florida, all began reopening in early May and had continued to reopen further even as cases increased. The past week has seen several states pause their reopening plans, most notably Texas, due to the increasing number of cases. Multiple localities have also begun to enact mandatory face covering requirements in public, including several cities and counties in Arizona and Florida. These new directives have also been in direct response to new outbreaks. While pauses in reopenings have been reported, there has yet to be a push to reinstate more restrictive policies either at a state or local level in areas seeing outbreaks. Whether states would reintroduce restrictions in response to a worsening outbreak situation has been a central question in the reopening process. Thus far, the answer has been no, and it is likely that outbreaks, especially in states such as Florida and Texas that have largely reopened to almost pre-COVID levels, will continue to worsen if public life is allowed to continue as is.

Part of the rise in case numbers is due to the U.S. significantly increasing testing capability to over 500,000 tests per day. However, rising hospitalization and test positivity rates show that current hard-hit states are likely seeing new or worsening outbreaks rather than just an increase in testing. Based on previous data, symptoms began on average six days after initial infection and hospitalization occurred on average seven days from symptom onset. As such, these averages suggest that the current hospitalization increases are unrelated to the newest increases in daily cases and that additional hospitalization increases are likely in the coming weeks. Medical facilities in Arizona, Texas, and Florida have all warned that they may begin to reach their peak capacity of patients due to the surges. The continuing increase in hospitalizations will also likely lead to the daily death average rising. Thus far in June, deaths have continued to decrease even as cases and hospitalizations increase. Historically, deaths have occurred almost three to four weeks after infections are reported and around one to two weeks after hospitalizations. States such as Arizona, Texas, and Florida have already begun to report daily death increases and these are likely to continue to rise over the next several weeks.

The recent surges have also impacted younger individuals more compared to initial outbreaks in March and April, which heavily impacted older individuals, including those in assisted living facilities. Arizona is seeing cases grow in those aged 20-44 twice as fast those over 65; in Florida, the median age of new cases fell from 65 in March to 35 as of this week; and in Texas, those aged 30 or younger are testing positive at the highest rate since the outbreak began. On average, younger individuals have shown to have less serious cases of COVID-19; however, these cases can still result in hospitalizations and deaths. Additionally, these individuals may risk transmitting the virus to others, including those more susceptible to the effects of the virus, as they go about their lives. This risk has increased significantly as states have reopened and people have begun to interact with other family members or individuals in their life. Moreover, younger individuals are more likely to travel between states, which could lead to an increased risk of COVID-19 again spreading outside current hotspots to other areas of the country due to the ease of interstate travel. In response to this, New York, New Jersey, and Connecticut issued new restrictions on Wednesday requiring travelers from states with high transmission to self-quarantine for 14 days.

Similar restrictions have been in place in a number of states since April, and as current outbreaks continue to grow, additional states could issue such restrictions in an attempt to quell additional spreading.

The below chart details current restrictions for states and provinces across North America and includes links to government websites and decrees. These should be monitored for the most up-to-date information on state and provincial restrictions in conjunction with local, state, and provincial COVID-19 websites.

As the resurgent outbreak continues to worsen, the potential for the reinstatement of restrictions or pausing of reopening plans cannot be ruled out. As reopenings continue in North America, some restrictions, such as face coverings, limited capacity in buildings, or health screenings by businesses are expected to remain in place for the foreseeable future. The public is reminded to heed all instructions related to COVID-19 from local authorities and public health officials. Any person exhibiting symptoms (such as fever, shortness of breathing, chills, muscle pain, or loss of taste or smell) should begin self-quarantining and contact a healthcare provider immediately. The CDC and PHAC both have dedicated pages to the ongoing outbreak, which can be accessed at the following links: <https://www.canada.ca/en/public-health/services/diseases/coronavirus-disease-covid-19.html>; <https://www.cdc.gov/coronavirus/2019-ncov/index.html>.

US REOPENING GUIDANCE

State	Stay at home order in effect until	Non-Essential Businesses Are Open	Elective Procedures	Face Masks in Public	Workplace Health Screening	Workplace Temperature Screening
Alabama	<u>No Longer Mandatory</u>	<u>Phase 1, April 30</u>	<u>Yes, April 30</u>	<u>Encouraged</u>	<u>Recommended</u>	<u>Recommended</u>
Alaska	<u>Expired</u>	<u>Phase 3/4, May 22</u>	<u>Yes, May 4</u>	<u>Encouraged</u>	<u>Recommended</u>	No Requirement
Arizona	<u>Expired</u>	<u>Phased, May 4</u>	<u>Yes, May 1</u>	<u>Encouraged</u>	<u>Recommended</u>	No Requirement
Arkansas	None Issued	<u>Phase 2, June 15</u>	<u>Yes, April 27</u>	<u>Encouraged</u>	<u>Recommended</u>	No Requirement
California	<u>Further Notice</u>	<u>Phase 2, May 8</u>	<u>Yes, April 22</u>	<u>Required</u>	<u>Required</u>	No Requirement
Colorado	<u>No Longer Mandatory</u>	<u>Phased, April 27</u>	<u>Yes, April 27</u>	<u>Encouraged</u>	<u>Required</u>	<u>Required</u>
Connecticut	<u>Expired</u>	<u>Phase 2, June 17</u>	<u>Yes, May 1</u>	<u>Required</u>	<u>Required</u>	<u>Recommended</u>
Delaware	<u>Expired</u>	<u>Phase 2, June 15</u>	<u>Yes</u>	<u>Required</u>	<u>Required</u>	<u>Required</u>
Washington DC	<u>Expired</u>	<u>Phase 2, June 22</u>	<u>Yes, May 29</u>	<u>Required</u>	<u>Required</u>	No Requirement
Florida	<u>Expired</u>	<u>Phase 2, June 5</u>	<u>Yes, May 4</u>	<u>Encouraged</u>	<u>Recommended</u>	No Requirement
Georgia	<u>Expired</u>	<u>Phased, April 24</u>	<u>Yes</u>	<u>Encouraged</u>	<u>Required</u>	No Requirement
Hawaii	<u>Expired</u>	<u>Phased, May 1</u>	<u>No</u>	<u>Encouraged</u>	<u>No Requirement</u>	No Requirement
Idaho	<u>Expired</u>	<u>Phase 4, June 13</u>	<u>Yes</u>	<u>Encouraged</u>	<u>Recommended</u>	<u>Recommended</u>
Illinois	<u>Expired</u>	<u>Phase 3, May 29</u>	<u>Yes, May 11</u>	<u>Required</u>	<u>Recommended</u>	No Requirement
Indiana	<u>Expired</u>	<u>Phase 4, June 14</u>	<u>Yes, April 27</u>	<u>Encouraged</u>	<u>Required</u>	<u>Recommended</u>
Iowa	None Issued	<u>Phased, April 27</u>	<u>Yes</u>	<u>Encouraged</u>	<u>Recommended</u>	<u>Recommended</u>
Kansas	<u>Expired</u>	<u>Phase 3, June 8</u>	<u>Yes, May 4</u>	<u>Encouraged</u>	<u>Recommended</u>	<u>Recommended</u>
Kentucky	<u>Expired</u>	<u>Phase 2, May 22</u>	<u>Yes*, April 27</u>	<u>Encouraged</u>	<u>Required</u>	<u>Required</u>
Louisiana	<u>Expired</u>	<u>Phase 2, June 5</u>	<u>Yes, April 27</u>	<u>Encouraged</u>	<u>Recommended</u>	No Requirement
Maine	<u>Expired</u>	<u>Phase 2, June 1</u>	<u>Yes, May 1</u>	<u>Required</u>	<u>Recommended</u>	No Requirement
Maryland	<u>Expired</u>	<u>Phase 2, June 3</u>	<u>Yes, May 6</u>	<u>Required</u>	<u>Recommended</u>	<u>Recommended</u>
Massachusetts	<u>No Longer Mandatory</u>	<u>Phase 2, June 8</u>	<u>Yes*, May 18</u>	<u>Required</u>	<u>Recommended</u>	No Requirement

US REOPENING GUIDANCE

State	Stay at home order in effect until	Non-Essential Businesses Are Open	Elective Procedures	Face Masks in Public	Workplace Health Screening	Workplace Temperature Screening
Michigan	June 19	Phase 5, June 10	Yes, May 29	Required	Required	Required
Minnesota	Expired	Phase 3, June 10	Yes, May 13	Encouraged	Recommended	Required*
Mississippi	Expired	Phased, April 27	Yes, April 27	Encouraged	Required	No Requirement
Missouri	Expired	Phase 2, June 16	Yes, May 3	Encouraged	No Requirement	No Requirement
Montana	Expired	Phase 2, June 1	Yes, April 27	Encouraged	Required	No Requirement
Nebraska	None Issued	Phase 3, June 22	Yes, May 4	Encouraged	Recommended	Recommended
Nevada	Expired	Phase 2, May 29	Yes, May 4	Encouraged	Required	Recommended
New Hampshire	Expired	Phased, June 29	Yes, May 4	Encouraged	Required	Required
New Jersey	June 8	Phase 2, June 15	Yes, May 26	Required	Required	Required
New Mexico	Expired	Phased May 1	Yes, May 15	Required	Required	Recommended
New York	Expired	Phase 3, June 17	Yes*, April 29	Required	Required	Recommended
North Carolina	Expired	Phase 2, May 22	Yes*, April 27	Encouraged	Required	No Requirement
North Dakota	None Issued	Phased, May 1	Yes	Encouraged	Recommended	Recommended
Ohio	No Longer Mandatory	Phased, June 19	Yes, May 1	Encouraged	Required	Recommended
Oklahoma	None Issued	Phase 3, June 1	Yes, April 30	Encouraged	Recommended	No Requirement
Oregon	Expired	Phase 2, June 5	Yes, May 1	Encouraged	Recommended	Recommended
Pennsylvania	Expired	Phased, June 12	Yes, April 27	Encouraged	Required	Recommended
Rhode Island	Expired	Phase 2, June 1	Yes, May 8	Encouraged	Required	No Requirement
South Carolina	Expired	Phased, April 20	Yes	Encouraged	Recommended	Recommended
South Dakota	None Issued	Yes	Yes	Encouraged	Recommended	No Requirement
Tennessee	Expired	Phased, April 27	Yes, April 30	Encouraged	Recommended	Recommended
Texas	Expired	Phase 3, June 3	Yes, April 22	Required	Recommended	Recommended

US REOPENING GUIDANCE

State	Stay at home order in effect until	Non-Essential Businesses Are Open	Elective Procedures	Face Masks in Public	Workplace Health Screening	Workplace Temperature Screening
Utah	None Issued	Phased, May 1	Yes, April 21	Required	Required	Required
Vermont	Expired	Phased, April 27	Yes, May 15	Required	Required	Required
Virginia	Expired	Phase 3, July 1	Yes, May 11	Required	Recommended	Recommended
Washington	Expired	Phase 3*	Yes, May 18	Required as of June 26	Required	Required
West Virginia	No Longer Mandatory	Phased, May 4	Yes, April 30	Encouraged	Required	Recommended
Wisconsin	Ruled Illegal, May 13	Yes, May 13	Yes	Encouraged	Recommended	No Requirement
Wyoming	None Issued	Phased, April 30	Yes	Encouraged	Required	No Requirement

*in phases see link for more details

'No, phased 'Date' indicates that non-essential businesses are not open yet but will start to reopen at said date in a phased manner.

Phase 'number', 'date' indicates the specific reopening phase a state is in and the date that specific phase started or is expected to start. It can be assumed any state that is on phase 2 or greater with a future date is currently in the previous phase number. States with just phased, 'date' are following phased reopening plans without specific phase numbers.

Green highlighted boxes indicate restrictions that were lifted since the previous Fact Sheet issued on June 18.

Yellow highlighted boxes indicate restrictions that are expected to be lifted within the next week

CANADA REOPENING GUIDANCE

Province	Stay at home order in effect until	Non-Essential Businesses Are Open	Elective Procedures	Face Masks in Public	Province Guidance for Employers
Alberta	None Issued	<u>Phase 2, June 12</u>	<u>Yes, May 4</u>	<u>Encouraged</u>	<u>Yes</u>
British Columbia	None Issued	<u>Phase 3, June 24</u>	<u>No</u>	<u>Encouraged</u>	<u>Yes</u>
Manitoba	None Issued	<u>Phase 3, June 21</u>	<u>Yes, May 4</u>	<u>Encouraged</u>	<u>Yes</u>
New Brunswick	None Issued	<u>Phased, April 29</u>	<u>No</u>	<u>Encouraged</u>	<u>Yes</u>
Newfoundland and Labrador	None Issued	<u>Phased, June 25</u>	<u>Yes</u>	<u>Encouraged</u>	<u>Yes</u>
Nova Scotia	<u>Expired</u>	<u>Phased, June 5</u>	<u>Yes, June 5</u>	<u>Encouraged</u>	<u>Yes</u>
Ontario	<u>Expired</u>	<u>Phase 2, June 12</u>	<u>No</u>	<u>Encouraged</u>	<u>Yes</u>
Prince Edward Island	<u>Expired</u>	<u>Phase 4, June 26</u>	<u>Yes, May 1</u>	<u>Encouraged</u>	<u>Yes</u>
Quebec	<u>Expired</u>	<u>Phased, June 22</u>	<u>No</u>	<u>Encouraged</u>	<u>Yes</u>
Saskatchewan	<u>Expired</u>	<u>Phase 3, June 8</u>	<u>Yes, May 4</u>	<u>Encouraged</u>	<u>Yes</u>
Northwest Territories	<u>May 26</u>	<u>Phase 2, June 12</u>	<u>Yes</u>	<u>Encouraged</u>	<u>Yes</u>
Nunavut	None Issued	<u>Yes</u>	<u>Yes</u>	<u>Encouraged</u>	<u>Yes</u>
Yukon	<u>July 1</u>	<u>Phase 2, July 1</u>	<u>July 1</u>	<u>Encouraged</u>	<u>Yes</u>

'No, phased 'Date' indicates that non-essential businesses are not open yet but will start to reopen at said date in a phased manner.

Green highlighted boxes indicate restrictions that were lifted since the previous Fact Sheet issued on June 18.

Yellow highlighted boxes indicate restrictions that are expected to be lifted within the next week

About the Author

Josh Strongin is a Lead Intelligence Analyst and the Risk Intelligence Monitoring Center's (RIMC) Regional Analyst for North America. Josh holds a BA in Political Science from The George Washington University, with a concentration in Intelligence and National Security. Josh also has comprehensive experience as a real-time domestic and international analyst.

He can be reached at: Josh.Strongin@everbridge.com.