

Myth vs. Reality: Travel Health & Safety Risks and Employer Travel Risk Management Best Practices



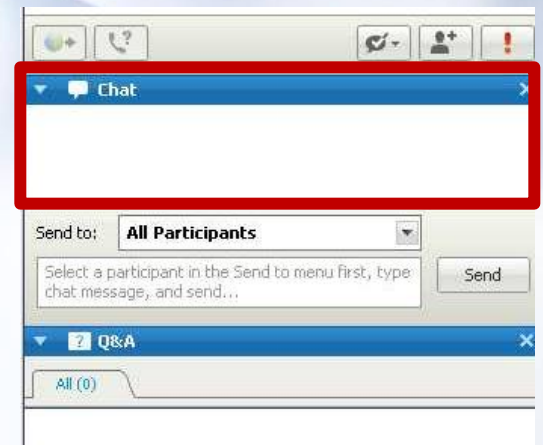
QUESTIONS AND ANSWERS



Participants will be muted throughout.

Please write any question you have in the 'questions' box, anytime during the presentation.

We will answer as many questions as we can.



MODERATOR



Annie Asrari

Director of Product Management
Everbridge

SPEAKERS



William Hauptman, MD

Senior Vice President and Regional Medical Director
International SOS



Zachary Falk

Regional Security Manager, Americas
International SOS and Control Risks



Arley Hanna

Regional Technology Specialist
International SOS

AGENDA



Perception of risk and expecting the unexpected

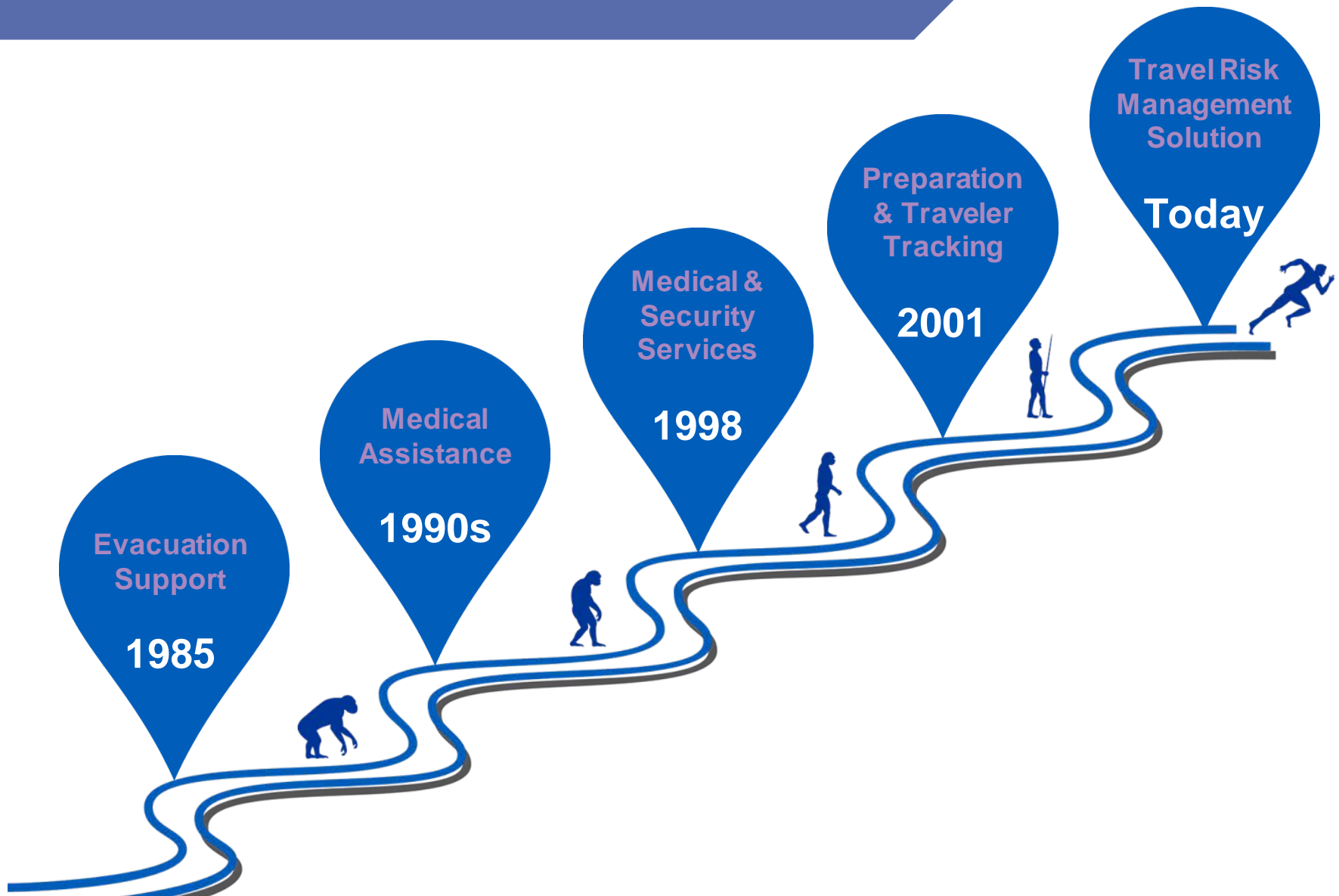


Integrated solution in action:
Global Risk Management Program



Wrap Up and Q&A

EVOLUTION OF OUR OFFERING



ORGANIZATIONAL PERCEPTION OF RISK

**Only 4% of
respondents
think travel
risks will
decrease in
2017.**

ORGANIZATIONAL PERCEPTION OF RISK

RISE IN RISK TO TRAVELLERS

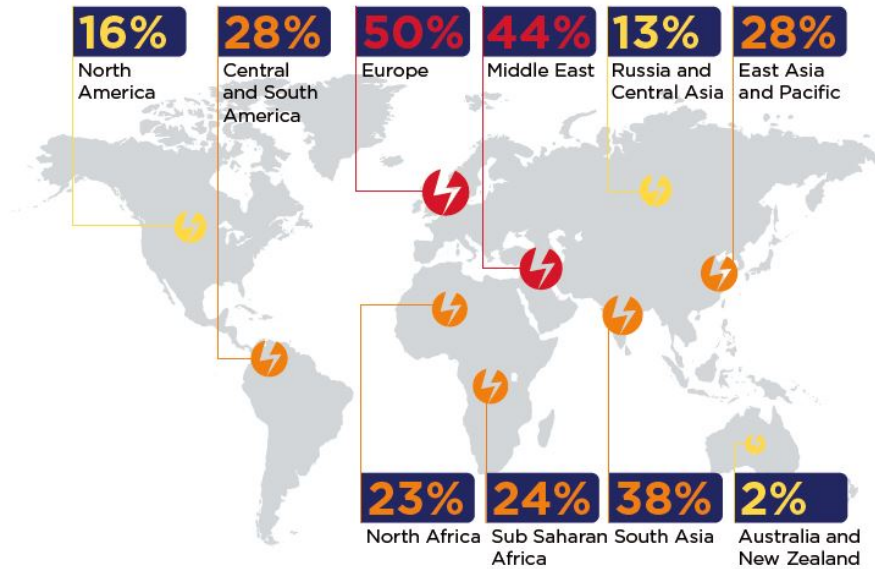
72%

say travel risks have increased over the past year

Those in Europe and North America most likely to say this

57%

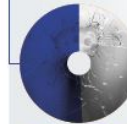
expect travel risks to increase in 2017



...say risks have increased for travellers to this region

80%

say their business has modified itineraries due to health or travel security concerns



51%

due to terrorism



36%

due to civil unrest



32%

due to country risk ratings

ORGANIZATIONAL PERCEPTION OF RISK

BUT BUSINESS TRAVEL CONTINUES TO RISE

2016

48%

report increased investment in travel risk mitigation over the past year

2017

47%

expect investment to increase in the coming year

44%

say number of travellers at their business have increased

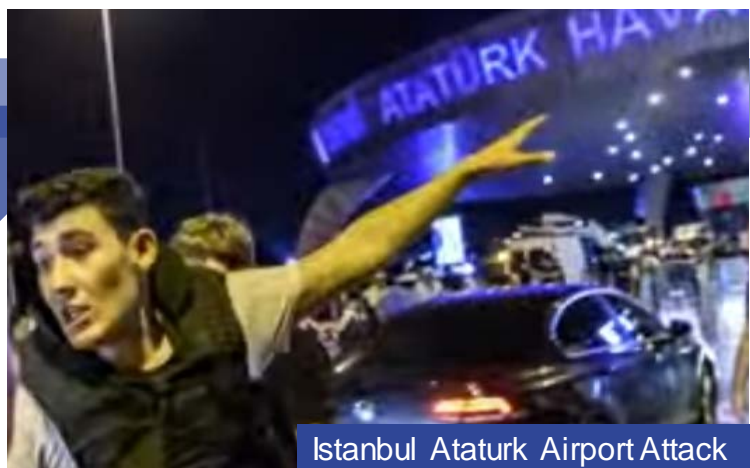
RECENT GLOBAL CHANGES



NEPAL EARTHQUAKE



ZIKA



Istanbul Atatürk Airport Attack



PARIS AND BRUSSELS ATTACKS



CYCLONE PAM



SYRIAN REFUGEES CRISIS



EBOLA WEST AFRICA

ISTANBUL ATATURK AIRPORT ATTACK

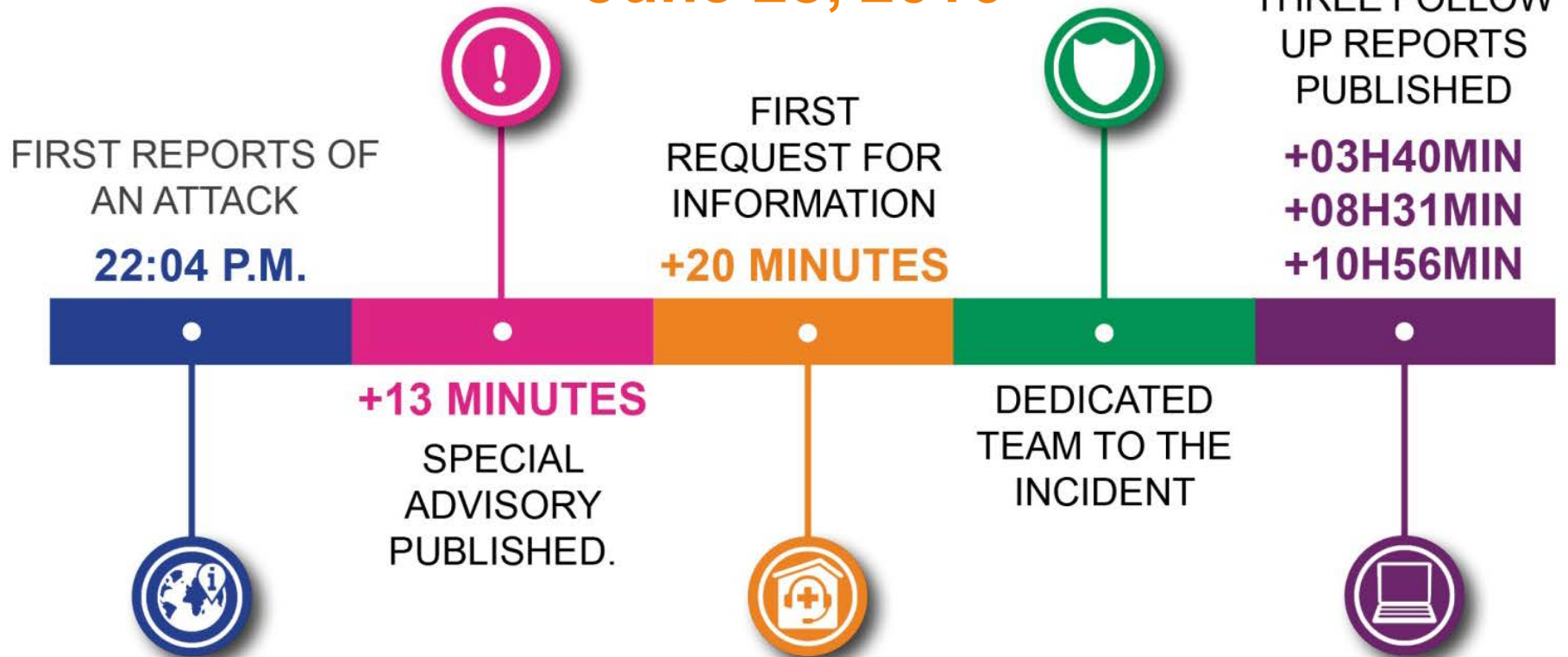
41 people are killed | **230** are injured | **Thousands** are affected



ISTANBUL ATATURK AIRPORT ATTACK

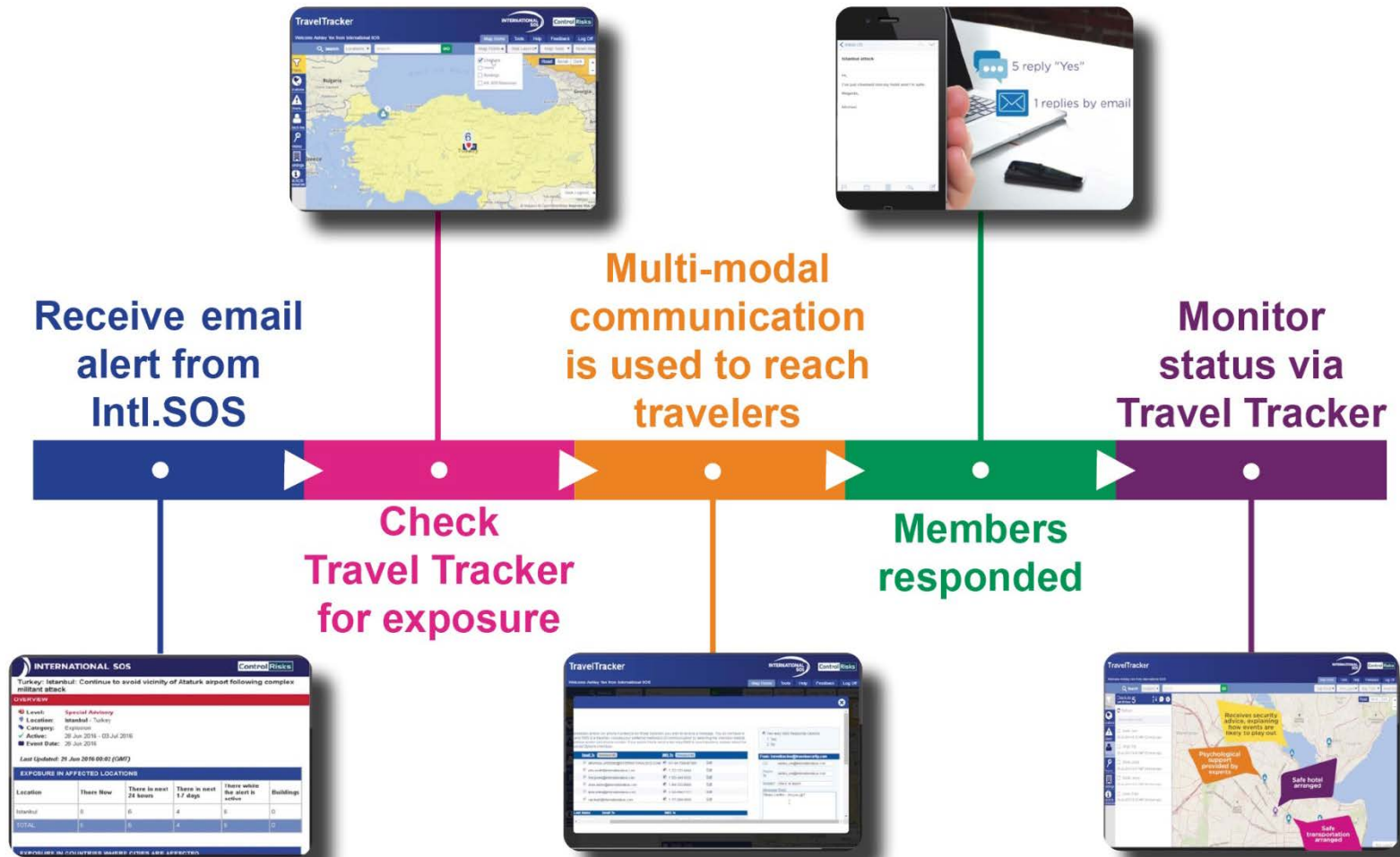
How International SOS supported

June 28, 2016



ISTANBUL ATATURK AIRPORT ATTACK

Global Risk Management Program in Action



DIGITAL LEARNING: HOW IT HELPS YOU

Threats to your personal security are present throughout your journey. Criminals often choose to target airports due to the concentration of travellers.

Put valuable/essential items in hand luggage

Keep a low profile

Increase your layers of protection

Listen to safety announcements



Increase your layers of protection. Deposit your luggage and move to departures as soon as you can. Watch your valuables when going through security screening, as security staff and other travellers have access to them. The safest place, once you have passed through security, is the business lounge where access controls are in place and you have a number of layers of protection.



Select the flashing arrow to continue

DIGITAL LEARNING: HOW IT HELPS YOU

There is a higher likelihood of terrorist attacks occurring in certain countries around the world. Apply the principles of personal security before and during travel to a country where there is this risk.



In urban terrain it is difficult to determine the direction of gunfire or to identify where the danger is. Look where other people are moving from, as this should indicate where the attack happened or the threat is located. Try to move to better cover if necessary, moving quickly and in short bursts between cover. Keep low or crawl if required so you don't become a target.



Select each image to find out more

TRACKING TRAVELERS: HOW IT HELPS YOU

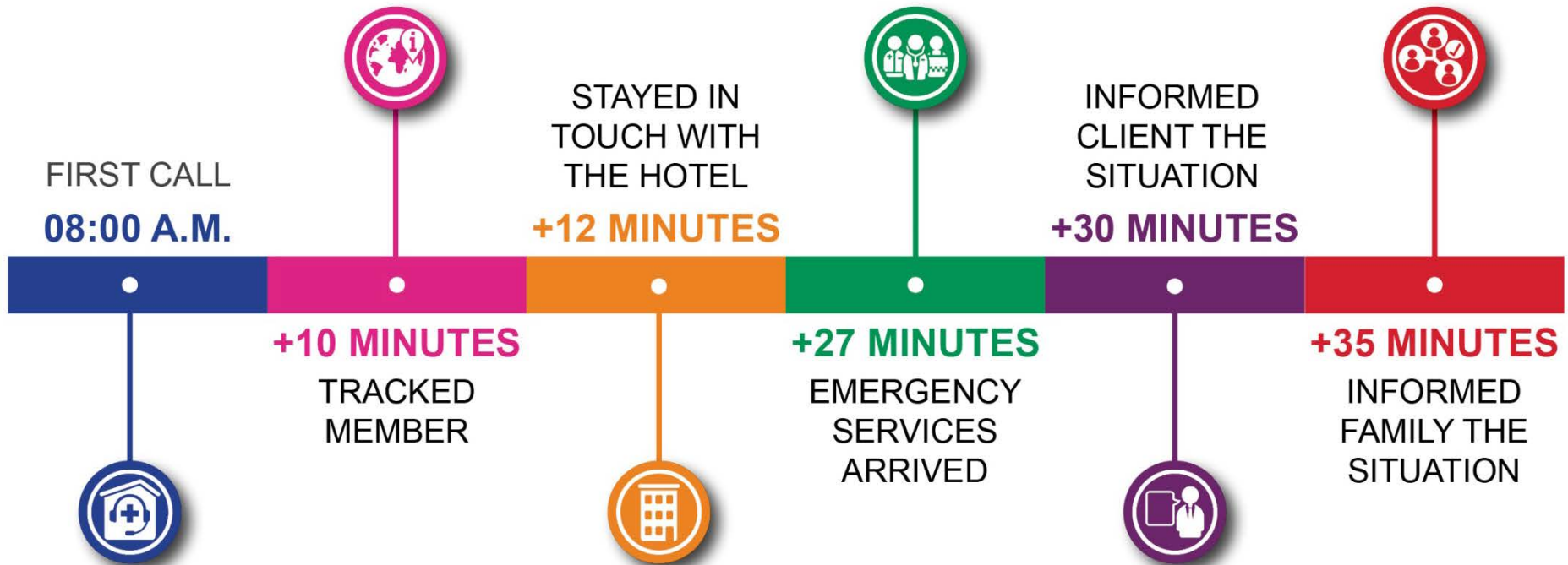


HOW YOUR INTEGRATED PROGRAM HELPS YOU RESPOND



HOW YOUR INTEGRATED PROGRAM HELPS YOU RESPOND

How International SOS will support



PREVENTING & MANAGING

**A mobile worker is in need,
what should you do?**

Preventing a Crisis

- Immediate response
- Tracking and communicating

Managing a Crisis

- Know where your employees are
- Get in touch with a person
- Global Health and Security expertise 24/7



GLOBAL RISK MANAGEMENT PROGRAM

**STAY
INFORMED**



**DIGITAL
LEARNING**



**EMERGENCY
RESPONSE**



**EASILY ACCESS
INFORMATION**



**REAL-TIME
ACCESS 24/7**



**TRACKING &
COMMUNICATING**



QUESTIONS?

